



Instructions

TJ/LJ - SPARE TIRE DELETE

Thank you for purchasing your Spare Tire Delete from AAL! We greatly appreciate your trust in our company. We take that purchase and your commitment to us very seriously. If you have any questions along the way, please don't hesitate to give us a call at 385.202.4188.

****Please read these instructions thoroughly before starting this project.****

****These instructions will cover the installation WITH the Camera Bracket. If you didn't purchase it with your Spare Tire Delete, simply ignore those steps.****

Tools/Components Required:

There is more than one tool for every job, but below is the list of tools we use for this installation.

Tools listed are for assembly only, as disassembly tools will vary.

- Impact or Ratchet
- M2.5 Allen Wrench/Socket
- M3 Allen Wrench/Socket
- M5 Allen Wrench/Socket
- Wire Strippers
- Wire Crimpers
- 7mm Wrench
- 10mm Wrench
- (4) 22awg Butt Connectors

What's Included

Spare Tire Delete Parts:

Main Plate	1	Brake Light Bracket	1
		Antenna Mount (If purchased)	1

Camera Mount Parts:

Middle Camera Bracket	1	Left Camera Bracket	1
Right Camera Bracket	1		

Spare Tire Delete Hardware:

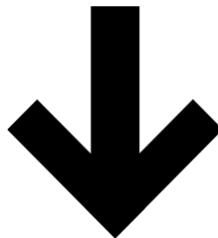
M6x8mm Button Head Bolts	4
M8x16mm Button Head Bolts	4

Camera Mount Hardware:

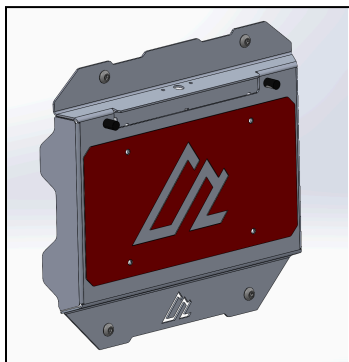
M4x12mm Button Head Bolts	6
M4 Nylon Insert Nuts	2

Part Overview and Prep

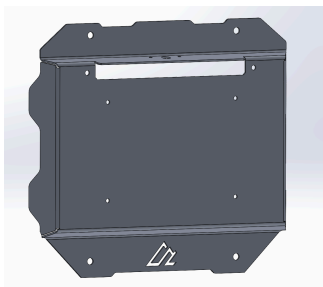
First lets review images of all the necessary parts and hardware to ensure we have everything we need for the installation process



Spare Tire Delete Parts:



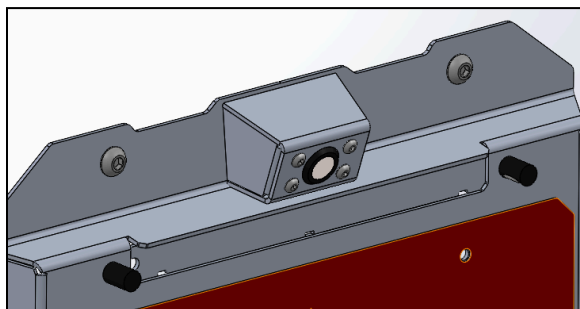
Main Plate:



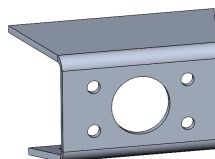
Brake Light Bracket



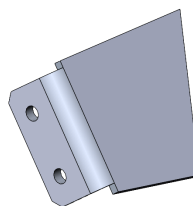
Camera Mount Parts:



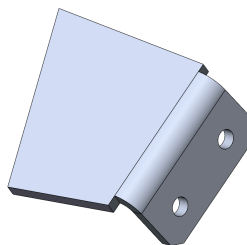
Middle Camera Bracket:



Right Camera Bracket:



Left Camera Bracket:



Tire Delete Hardware:

M6x8mm Button Head Bolts 4



M8x16mm Button Head Bolts 4



Camera Mount Hardware:

M4x12mm Button Head Bolts 6



M4 Nylon Insert Nuts 2



Prep

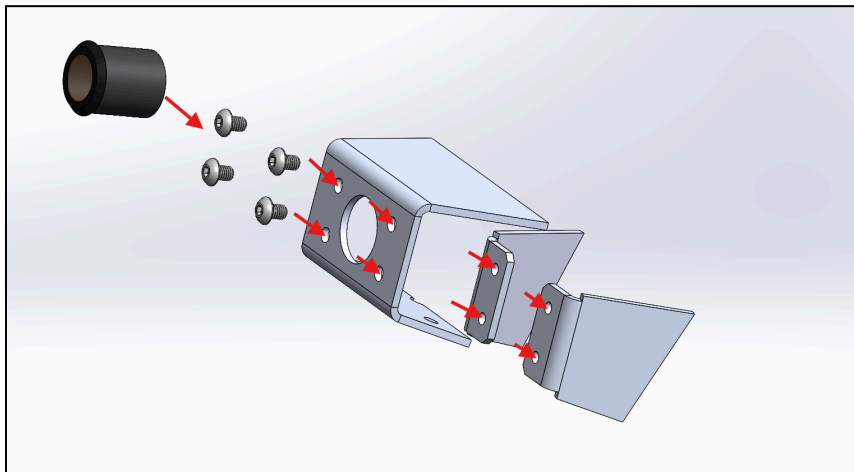
Start by removing your OEM tire carrier, 3rd brake light assembly, and back up camera assembly. Disassemble the OEM back up camera mount. All you need to reuse is the camera itself.

Step 1 - Camera Bracket Assembly

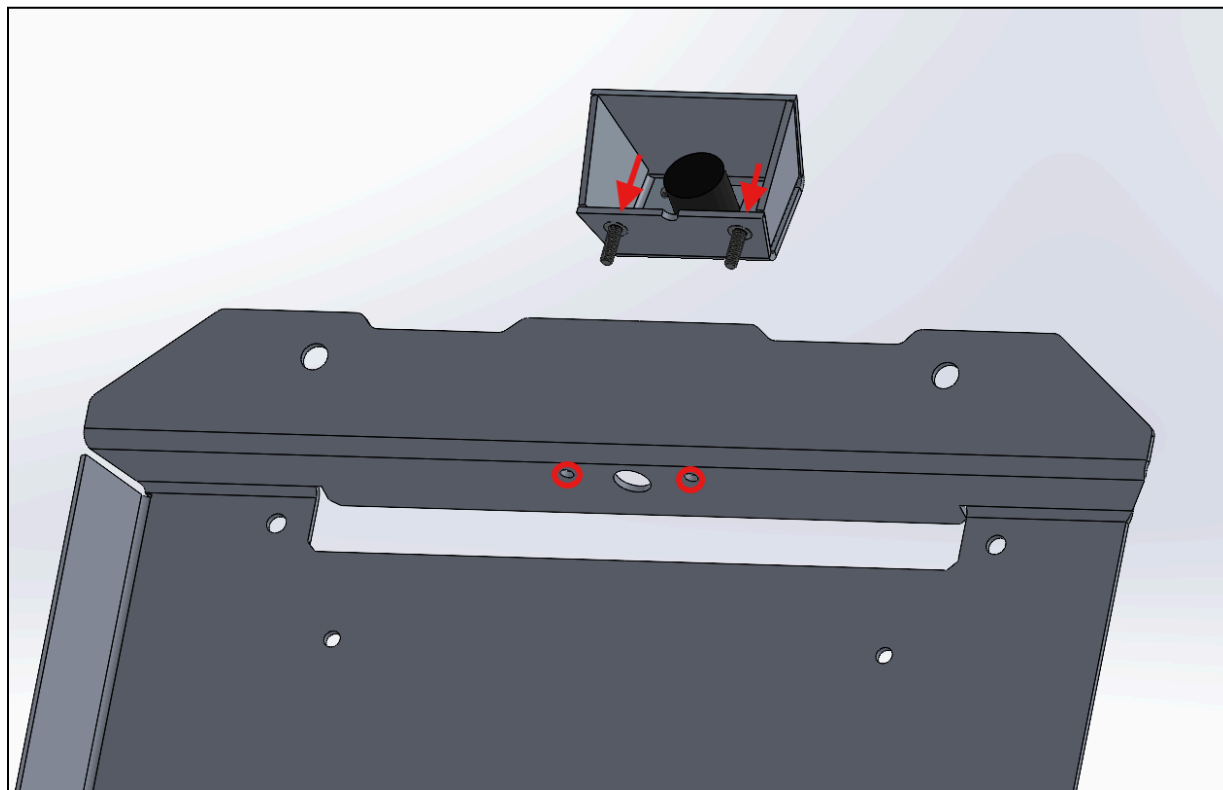
If you didn't purchase the Camera Bracket, skip ahead to Step 2.

Now you can assemble the backup camera assembly.

Using **(4) M4x12mm Button Head Bolts**, screw the camera into the Middle Camera Bracket with the right and left camera brackets aligned as shown below.



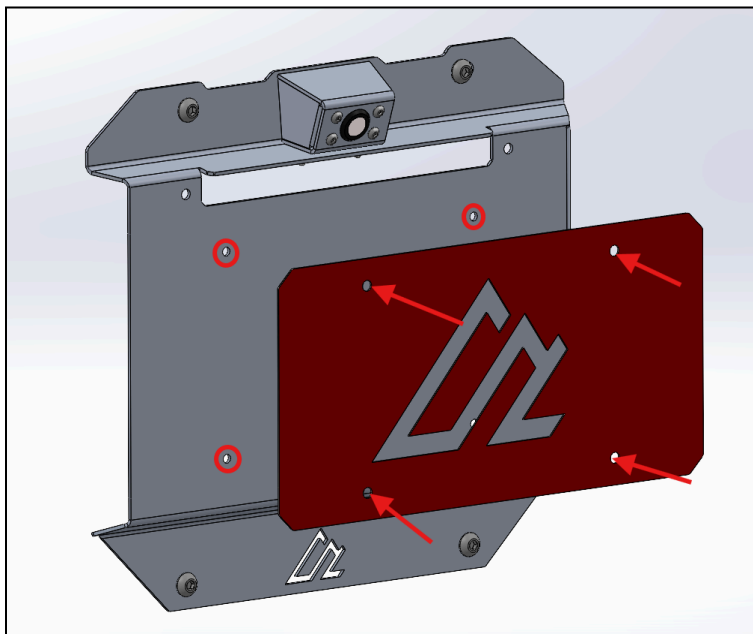
After you've mounted the camera to the bracket assembly for your application, you can now assemble the rest of the camera bracket. Using **(2) M4x12mm Button Head Bolts** and **(2) M4 Nylon Nuts**, fasten the camera sub assembly to the **Main Bracket**. Make sure to feed the camera wire through the circular hole below. We recommend putting the bolts in the middle camera bracket first and interesting into the Mian bracket almost like charger as shown below



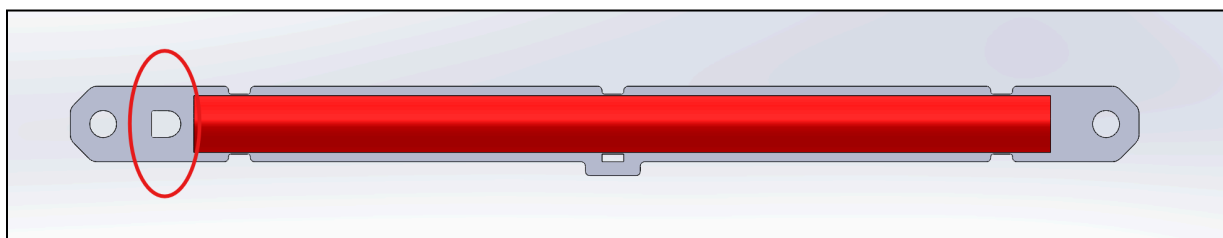
These brackets are aluminum and will strip easily. Be careful not to over tighten!

Step 2 - Assemble License Plate Mount

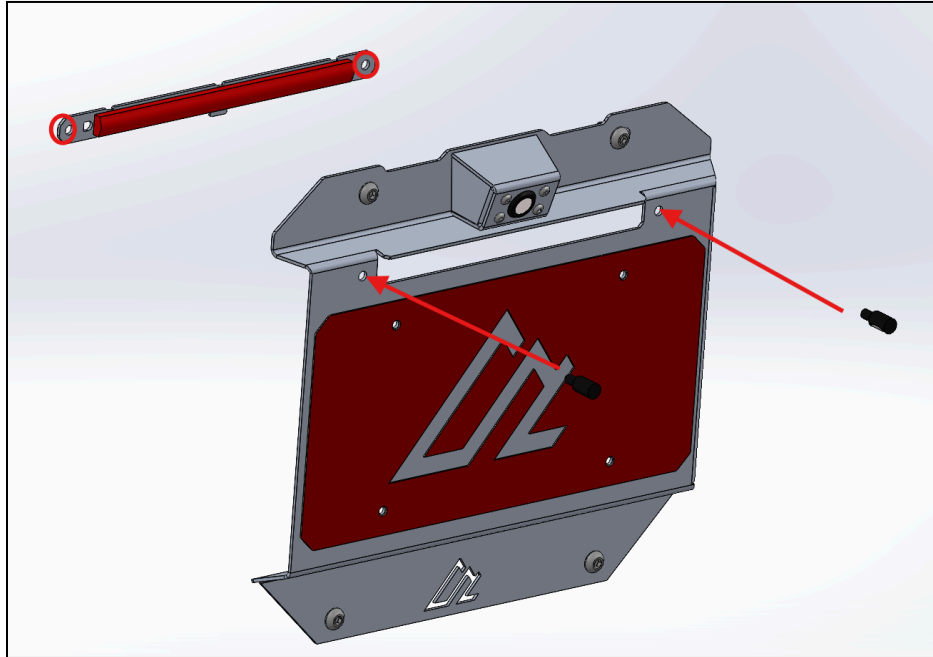
Using the (4) **M6x8 Button Head Bolts**, attach your license plate to the **Main Bracket** shown below



Next, orient the supplied third brake light to the bracket light mounting plate by threading the light wires through the “D” shaped hole in the mounting plate and attach the light using the adhesive strip on the back of it. *There are zip tie holes on the mounting plate in case the light ever starts to come off. These are optional.*

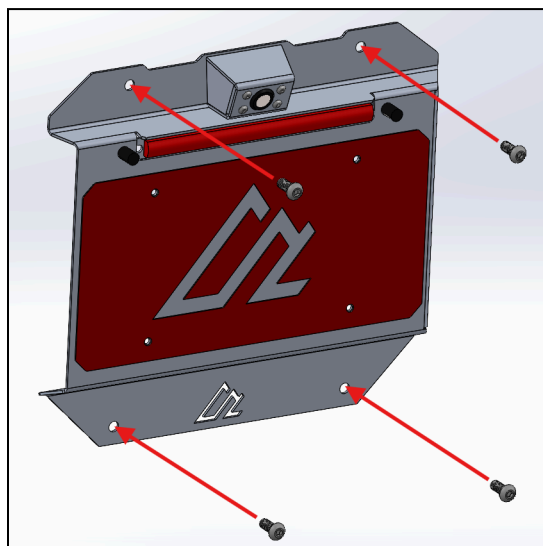


Once that is done, attach the brake light plate assembly to the License Plate Mount using the **(2) supplied stud lights**. Do so by feeding the wires through both the brake light plate and license plate mount. Align your tag lights as desired, then tighten the nuts on the back side using a 10mm wrench. *Make sure the third brake light wires are on the right when looking at the spare tire delete kit.*

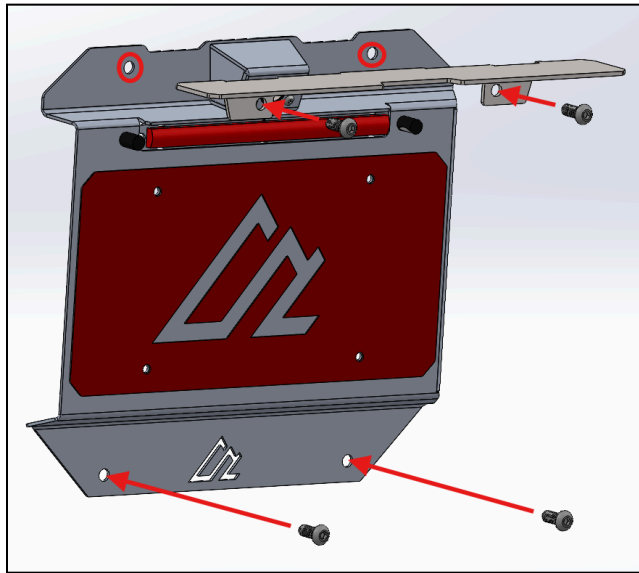


Step 3: Installing Spare Tire Delete

Once the License Plate Mount is fully assembled, you can wire it to the Jeep. Before starting on the wiring, it is advised to go ahead and install the **Main Bracket to the vehicle** with the **Main Plate** placed in between using **(4) M8x16mm Button Head Bolts** as shown below



If you purchased the whip mount:



Follow wiring descriptions below for all wiring. You can make connections using a method of your choosing, but we recommend solder and heatshrink.

Step 4: Wiring Guide

NOTE: Depending on your final finish, you may or may not want to use the optional zip ties for the third brake light. Rough finishes are more likely to need them. There are three slots cut into the 3rd brake light bracket to accept the optional included zip ties.

License Plate Lights:

To illuminate the license plate, you'll need to use the lighted LED bolts to secure the top of your third brake light plate and angle the LED lights downward. The wire from each tag light should be connected to the OEM tag light harness. This can be connected to any switched 12V power source. If you want to use the OEM tag light circuit, you will need to extend the 12V wires from the OEM license plate light up into the tailgate. The black wires from the LED license plate lights should be connected to

Third Brake Light:

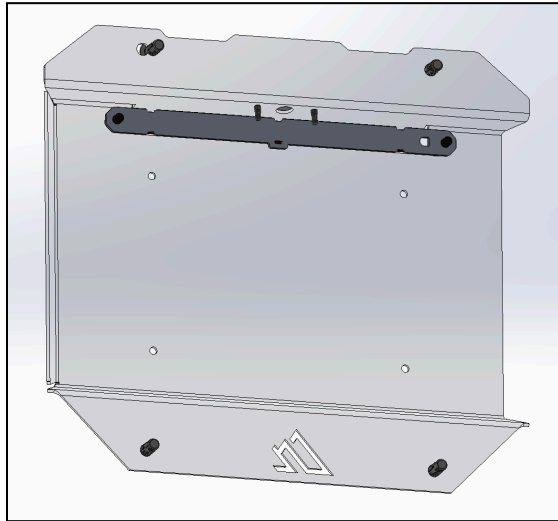
To connect the third brake light, you need to connect the wires from your OEM third brake light to the red wire on the new LED strip. The black wire from the LED strip should be connected to the black ground wire from the OEM 3rd brake light harness.

Optional Brake Light Functionality:

The following are optional circuits on the LED strip:

- White: Running Light (could be connected to white/blue)
- Yellow: Right Turn (would need to bring in wire from right turn signal)
- Green: Left Turn (would need to bring in wire from left turn signal)

Once all connections are made, install License Plate Mount to the tailgate using the remaining M8 bolts. If applicable, first, feed the camera wire through the opening in the base plate and up through the small notch in the top of the License Plate Mount and connect it to the camera.



Once you have the camera wire routed, install the bolts and tighten all hardware.

Step 5: Share Your Photos

We take great pride in building our products and we hope that pride extends to you after installing your Spare Tire Delete. If you are able to share your photos online (Facebook and Instagram), please tag **@AmericanAdventureLab**. We would love to see how it turned out and give you some reciprocal attention in return!

Congrats! You're all done!

Thank you!

At American Adventure Lab, we strive to improve anywhere we can. If you experience any issues with this product or have any suggestions, please let us know.

If you have any questions or concerns, please don't hesitate to reach out to us at 385.202.4188 or via email at Support@erp.adventurelab.com.

